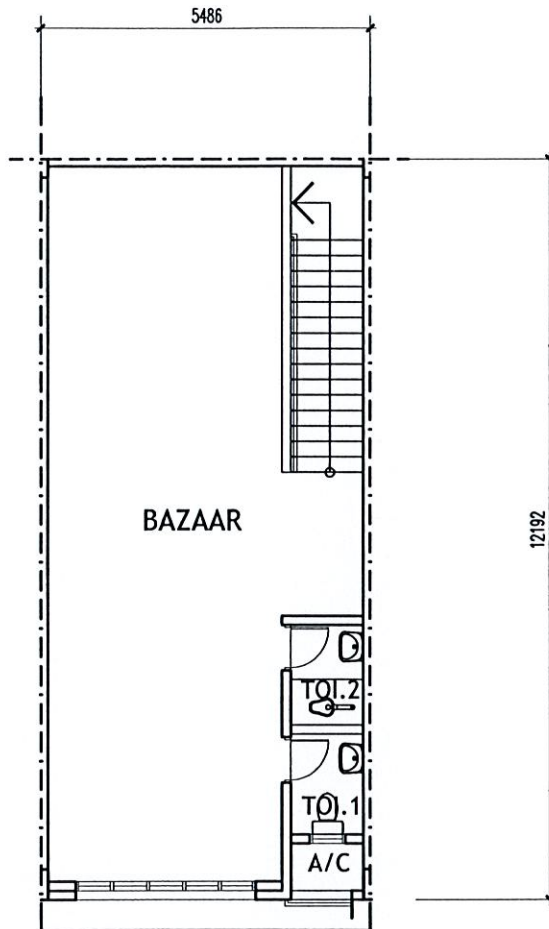


GROUND FLOOR PLAN

DOUBLE STOREY BAZAAR

All drawings are subjected to changes as directed by the relevant authorities or the developer's architect.

BAZAAR (TYPE B1)	
BLOCK	UNIT NUMBER
A	3, 7, 11, 15, 19, 27, 31, 35, 39
B	3, 6, 7, 10, 11, 12A, 15, 18, 19, 26, 27, 30, 31, 32A, 35, 38, 39, 42
C	6, 10, 12A, 18, 26, 30, 32A, 38, 42
D	3, 7, 11, 15, 19, 27, 31, 35, 39
E	3, 6, 7, 10, 11, 12A, 15, 18, 19, 26, 27, 30, 31, 32A, 35, 38, 39, 42
F	6, 10, 12A, 18, 26, 30, 32A, 38, 42



FIRST FLOOR PLAN

DOUBLE STOREY BAZAAR

All drawings are subjected to changes as directed by the relevant authorities or the developer's architect.

BAZAAR (TYPE B1)	
BLOCK	UNIT NUMBER
A	3, 7, 11, 15, 19, 27, 31, 35, 39
B	3, 6, 7, 10, 11, 12A, 15, 18, 19, 26, 27, 30, 31, 32A, 35, 38, 39, 42
C	6, 10, 12A, 18, 26, 30, 32A, 38, 42
D	3, 7, 11, 15, 19, 27, 31, 35, 39
E	3, 6, 7, 10, 11, 12A, 15, 18, 19, 26, 27, 30, 31, 32A, 35, 38, 39, 42
F	6, 10, 12A, 18, 26, 30, 32A, 38, 42